

### Product Introduction & Benefits

The NMF-758 is a standard 19" rack-mountable converter chassis with 4 available slots. The chassis is designed for flexibility as well as performance and it offers a robust solution for small to medium-sized network applications. It is a cost-effective solution for network linkage in a spread-out workgroup configuration. Being SNMP ready, it can be managed 'in-band' via an SNMP station or a LAN via the Internet – or 'out-of-band' on the RS-232 console port. This abundance of features means easy network monitoring and troubleshooting.

The chassis can support Ethernet, Fast Ethernet and Gigabit media converter line cards that cover a wide variety of fiber-optic and copper cabling interfaces. It is possible to mix and match the arrangement of media converter types to design a configuration that is best suited for any given network. The front-panel LEDs offer "at a glance" information on the status of the cooling fans and power supply. The chassis also features a redundant power supply unit that ensures continuous operation.



### Main Features:

#### NMF-758:

##### Module:

- Supports up to 4 line-card media converters
- Hot-swappable
- Supports mixing and matching of 10/100/1000-Base, Copper, fiber, single/multi-mode and WDM products with ST, SC, MT-RJ, VF-45, or LC connectors

##### Power & Redundancy:

- Redundant power
- Available with AC 100-240V and DC -48V power supply
- 2 high-volume cooling fans

##### Management:

- LED status panel for fan, power, and slot
- Web, SNMP, Console management
- Menu-driven, Command Line Interface

##### Mechanical & Environmental:

- Durable 19" Rack-mountable chassis construction
- FCC Class A & CE approved

#### NMF-759A (Management Module):

- One LAN port for Web & SNMP
- One RS-232 port (RJ-45) for Console
- LAN port supports Auto MDI/MDI-X
- LAN port supports 10/100Mbps Auto-negotiation
- LED status for Power, SYS (POST), Alarm, 100, Link/Activity
- Push-button for system restart
- Supports various "mix and match" management-ready modules – from 10/100/1000 to multi-mode / single mode
- If NMF-759A is not installed, then the chassis' converters will function as unmanaged converters



## Specifications:

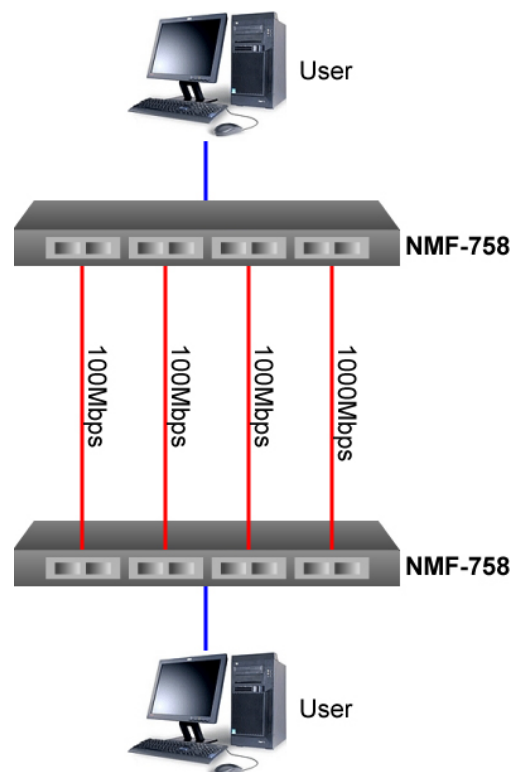
<b>Capacity:</b>	Four slots for up to four media converters
<b>Chassis:</b>	Steel
<b>Cooling:</b>	Via side vents
<b>Unit LED:</b>	PWR: Green RPS: Green
<b>Power:</b>	Power Input: AC100~240V AC @ 47 ~ 63Hz, DC-48V Power Output: +12V DC/2A
<b>Temperature:</b>	Operating: 0°C to 45°C Storage: -20°C to 80°C
<b>Humidity:</b>	Operating: 10% to 80% RH (Non-condensing) Storage: 5% to 90% RH (Non-condensing)
<b>Emissions:</b>	FCC class A & CE approved
<b>Dimensions:</b>	344 x 440 x 44mm (DxWxH)
<b>Weight:</b>	4kg (without converters)

## Applications:

The NMF-758 can accommodate a wide variety of our existing and future media converters – please contact us for details regarding these products.

## Ordering Information:

- NMF-758:**  
19" Rack-mountable 4-slot Card-based Media Converter Chassis with one (100-240V) AC power supply
- NMF-758R:**  
19" Rack-mountable 4-slot Card-based Converter Chassis with redundant AC power supply
- NMF-758D:**  
19" Rack-mountable 4-slot Card-based Converter Chassis with one DC-48V power supply
- NMF-758DR:**  
19" Rack-mountable 4-slot Card-based Converter Chassis with redundant DC-48V power supply
- NMF-759A:**  
Management Interface Module
- NMF-759**  
Managed 10/100 to 100Base-FX Module



(August 2006)  
Specifications subject to change without prior notice.