

Product Introduction & Benefits



VOLKTEK's **NSH-5508** Managed Access Switch is equipped with eight 10/100Base-TX ports. It was designed with SNMP, RMON, flexible network management and monitoring options for increased efficiency and performance. Whether managing via an 'in-band' SNMP management station or Internet web browser, or 'out-of-band' via the RS-232 console port, the **NSH-5508** facilitates network monitoring and troubleshooting with its user-friendly features.

The **NSH-5508** is a feature-rich switch that offers VLAN, spanning-tree protocol, port isolation, and much more. Special software features can also be added upon request. Integrating Auto MDI/MDI-X and NWay capabilities, the **NSH-5508** is simple to deploy within a network. Its slim housing design makes it ideal for installation in locations with limited space and in applications requiring low port density.

Main Features:

Standards:

- IEEE: 802.3, 802.3u, 802.3x, 802.3ad, 802.1d, 802.1w, 802.1q, 802.1p

Interface:

- Eight 10/100Base-TX RJ-45 ports
- RS-232 Console (RJ-45)

Networking:

- Spanning Tree Protocol/Rapid Spanning Tree Protocol
- Proprietary Xpress Ring protocol
- IGMP Snooping for multicast filtering
- Rate limitation & Network Storm Protection
- Port loop detection
- Port-based MAC address quantity limitation
- Full VLAN (802.1q) with double tagging (Q in Q)
- LACP
- CoS and ToS/DiffServ for service differentiation

Management:

- Web-based GUI
- SNMP
- RMON
- Telnet/Console
- Command Line Interface
- User's IP security control to prevent illegal access
- E-mail alarm warning
- Port configuration, status, statistics, security
- Port mirroring
- Management VLAN
- Cable test

Power:

- 100 ~ 240V AC auto-ranging power input
- -48VDC power option available
- +12VDC power option available

Mechanical & Environmental:

- Desktop and rack-mountable unit
- Operating temperature: 0°C~50°C



Specifications:

Standards:	IEEE 802.3u 100Base-TX	QoS:	Port-based, IEEE 802.1p tag, IPv4
	IEEE 802.3ad Port Trunking		ToS/DiffServ, IPv6 Traffic Class,
	IEEE 802.3 10Base-T		source/destination MAC address
	IEEE 802.1d Spanning Tree Protocol	Max Distances:	10/100Base-TX: 100m
	IEEE 802.3x Flow Control		RS-232: 15m
	IEEE 802.1w Rapid Spanning Tree Protocol	Power:	Power Input: 100 ~ 240VAC, -48VDC +12VDC
	IEEE 802.1p Priority Queues	Temperature:	Operating: 0°C to 50°C Storage: -20°C to 70°C
	IEEE 802.1q VLAN Tagging	Humidity:	Operating: 10% to 80% RH Storage: 5% to 90% RH
Ports:	8 x 10/100Base-TX (RJ-45)	Emissions:	FCC Part 15 of Class A & CE Approved
	1 x RS-232 Console (RJ-45)	Dimensions:	128 x 268 x 44 mm (D x W x H)
Throughputs:	14,880 packets per second (pps) to 10 Mbps ports	Weight:	1200g
	148,800 pps to 100BASE-TX ports		
MAC Table:	Up to 8K addresses		
VLANs:	Port-based		
	Tag-based (4000VIDs)		

Applications:

Designed for FTTx applications. The diagram on the right illustrates a typical MTU/MDU application for the NSH-5508 series. The actual distances will depend on several factors, including the quality of the cables used and the terminal equipment employed.

Ordering Information:

NSH-5508:

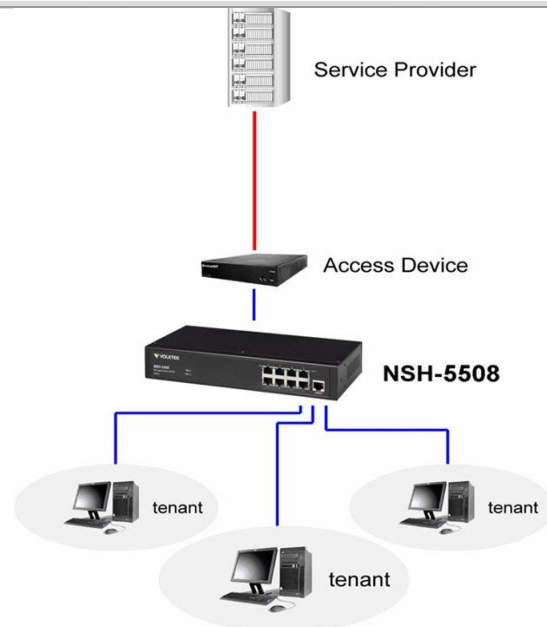
Managed 8-port 10/100Base-TX Switch

NSH-5508D:

Managed 8-port 10/100Base-TX Switch with DC-48V power supply

DR-037:

19" rack-mounting kit



(November 2007)
Specifications subject to change without prior notice.