

Product Introduction & Benefits



The **NSH-580** is a high performance managed SNMP Layer 3 switch that provides users with 24 x 10/100Mbps Ethernet and 4 Gigabit Combo ports. The Web/SNMP management provides remote control capability that gives flexible network management and monitoring options. Whether managed through "in-band" SNMP management station, internet web browser, or through "out-of-band" RS-232 console port, the **NSH-580** facilitates network operational control and diagnosis.

For increased bandwidth application, **NSH-580** can accommodate up to 7 trunk groups with 4 ports in each trunk. Moreover, these trunk ports are with fair-over function to provide redundant back up if one or more of ports are malfunctioning. It also supports both Port-based VLAN and Tag-based VLAN thereby simplifying network traffic segmentation, broadcast domain extension and other associated benefits of constructing VLANs. The abundance of features translates into increased efficiency and performance in network administration.

Main Features:

Standards:

- IEEE: 802.3, 802.3u, 802.3z, 802.3x, 802.3ad, 802.1d, 802.1w, 802.1q, 802.1p

Interface:

- Twenty four 10/100Base-TX RJ-45 ports
- Four Gigabit SFP/RJ-45
- RS-232 Console (RJ-45)

Networking:

- Spanning Tree Protocol/Rapid Spanning Tree Protocol/Multiple Spanning Tree
- Automatic learning of up to 16K MAC addresses
- IGMP Snooping for multicast filtering
- Ingress/Egress Rate limitation
- Access Control List
- 8 Priority Queues
- Full VLAN (802.1q) with double tagging (Q in Q)
- LACP Link Aggregation
- GVRP VLAN Registration Protocol

Routing:

- Static route
- RIP
- OSPF
- Multicast route
- VRRP

Management:

- Web-based GUI
- SNMP
- RMON
- Telnet/Console
- Command Line
- User's IP security control to prevent illegal access
- E-mail alarm warning
- Port configuration, status, statistics, security
- Loss of link management on fiber ports
- Port mirroring

Power:

- 100 ~ 240VAC auto-ranging power input
- -48VDC power option available

Mechanical & Environmental:

- Desktop and rack-mountable unit
- Operating temperature: 0°C~50°C

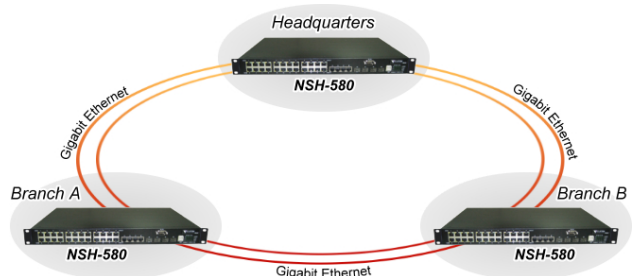


Specifications:

Standards:	IEEE 802.3u 100Base-TX/FX	QoS:	Port-based, IEEE 802.1p tag, IPv4 ToS/DiffServ, IPv6 Traffic Class, source/destination MAC address
	IEEE 802.3z 1000Base-SX/LX/LHX	Wavelength:	850nm (multi-mode) 1310nm (single-mode)
	IEEE 802.3ad Port Trunking	Max Distances:	10/100Base-TX: 100m RS-232: 15m Fiber Optic: Up to 120km
	IEEE 802.3 10Base-T	Power:	Power Input: 100 ~ 240VAC -48VDC
	IEEE 802.1d Spanning Tree Protocol	Temperature:	Operating: 0°C to 50°C Storage: -20°C to 70°C
	IEEE 802.1w Rapid Spanning Tree Protocol	Humidity:	Operating: 10% to 80% RH Storage: 5% to 90% RH
	IEEE 802.3x Flow Control	Emissions:	FCC Part 15 of Class A & CE Approved
	IEEE 802.1p Priority Queues	Safety:	EN 60950
	IEEE 802.1q VLAN Tagging	Dimensions:	128 x 268 x 44 mm (D x W x H)
Ports:	8 x 10/100Base-TX (RJ-45) 2 x SFP 1 x RS-232 Console (RJ-45)	Weight:	1200g
Throughputs:	14,880/148,800/1,488,000 packets per second (pps) to 10/100/1000 Mbps ports		
MAC Table:	Up to 8K addresses		
VLANs:	Port-based and Tag-based (4KVIDs)		

Applications:

Designed for FTTH applications. The diagram on the right illustrates a typical MTU/MDU triple-play application for the NSH-580 series. The actual distances will depend on several factors, including the quality of cables used and the terminal equipment employed.



Ordering Information:

NSH-580:

Managed 24-port + 4G Combo L3 Switch

NSH-580D:

Managed 24-port + 4G Combo L3 Switch with DC-48V power supply

NSH-580R:

Managed 24-port + 4G Combo L3 Switch with redundant AC power inputs

NSH-580DR:

Managed 24-port + 4G Combo L3 Switch with redundant DC-48V power supply